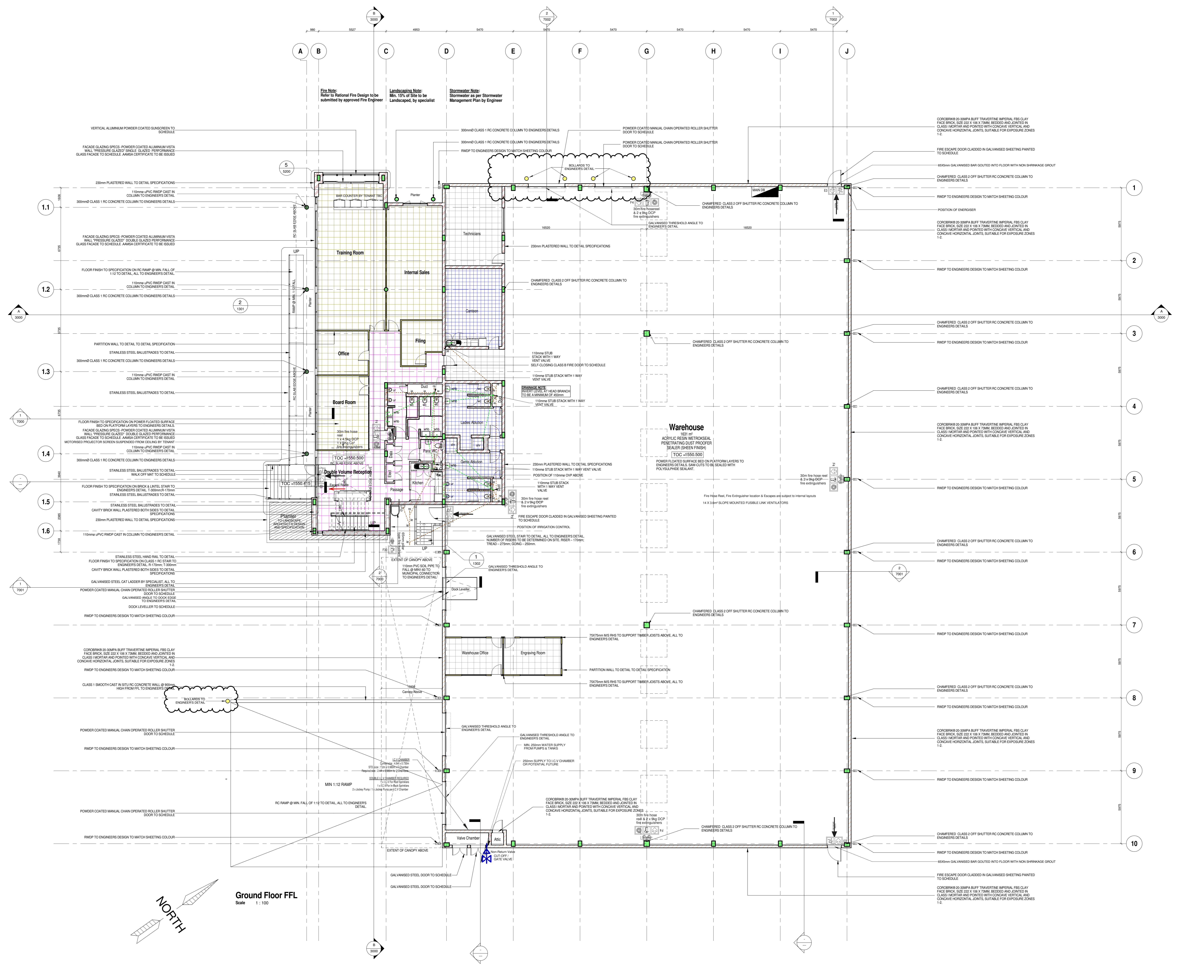


GENERAL NOTES

ALL WORKING TO COMPLY WITH SANS 10400 OR BY RATIONAL APPROVED DESIGN TO COMPLY WITH FOLLOWING GUIDELINES:

B. Structural Design SANS 10400-B, Structural design
 C. Dimensions SANS 10400-C, Dimensions
 D. Public Safety SANS 10400-D, Public safety
 E. Fire Protection SANS 10400-E, Fire protection
 F. Site Operations SANS 10400-F, Site operations
 G. Foundations SANS 10400-G, Foundations
 H. Foundations SANS 10400-H, Foundations
 I. Floors SANS 10400-I, Floors
 J. Walls SANS 10400-J, Walls
 K. Roofs SANS 10400-K, Roofs
 L. Stairways SANS 10400-L, Stairways
 M. Stairways SANS 10400-M, Stairways
 N. Glazing SANS 10400-N, Glazing
 O. Lighting and Ventilation SANS 10400-O, Lighting and ventilation
 P. Drainage SANS 10400-P, Drainage
 Q. Non-water borne Means of Sanitary Disposal SANS 10400-Q, Non-water borne means of sanitary disposal
 R. Stormwater Disposal SANS 10400-R, Stormwater disposal
 S. Facilities for Persons with Disabilities SANS 10400-S, Facilities for persons with disabilities
 T. Fire Protection SANS 10400-T, Fire protection
 U. Signage SANS 10400-U, Signage
 V. Signage SANS 10400-V, Signage
 W. Fire Installation SANS 10400-W, Fire installation



Ground Floor FFL
 Scale 1:100

no.	date	description
1	2014-09-03	ISSUANCE INDICATED
2	2014-09-03	ISSUANCE INDICATED
3	2014-09-03	ISSUANCE INDICATED
4	2014-09-03	ISSUANCE INDICATED
5	2014-09-03	ISSUANCE INDICATED
6	2014-09-03	ISSUANCE INDICATED
7	2014-09-03	ISSUANCE INDICATED
8	2014-09-03	ISSUANCE INDICATED
9	2014-09-03	ISSUANCE INDICATED
10	2014-09-03	ISSUANCE INDICATED

empowered spaces
 1st Flr: 100, 200th St, 100 200th St, 100 200th St, 100 200th St
 P.O. Box 578, Tlokweng, 011 501 4762

COPYRIGHT NOTE
 This drawing is subject to copyright and may not be reproduced, in whole or part, or in any manner whatsoever without written permission from the architect.

DISCLAIMER NOTE
 This drawing is produced in accordance with the relevant standards and specifications. The architect does not accept any responsibility for any errors or omissions in the drawing.

SCALING
 Drawings not to be scaled, report any discrepancies to architect before construction or manufacturing.

client
 Growthpoint Properties Limited

signature

project
 Proposed Building 3 - Geze **GEZE**

stand number
 Erf 518 Halfway House Ext. 64

engineer
 Kaitlyn S. Tamplin
 contact: 011 501 4762

signature

project architect
 G. Turbridge
 contact: (011) 883 8300

signature

job number	drawing number
1063	1000
A0	1:100
revision number	issued for
7	CONSTRUCTION